
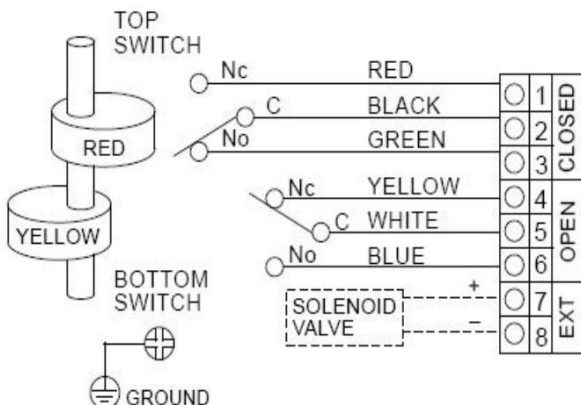
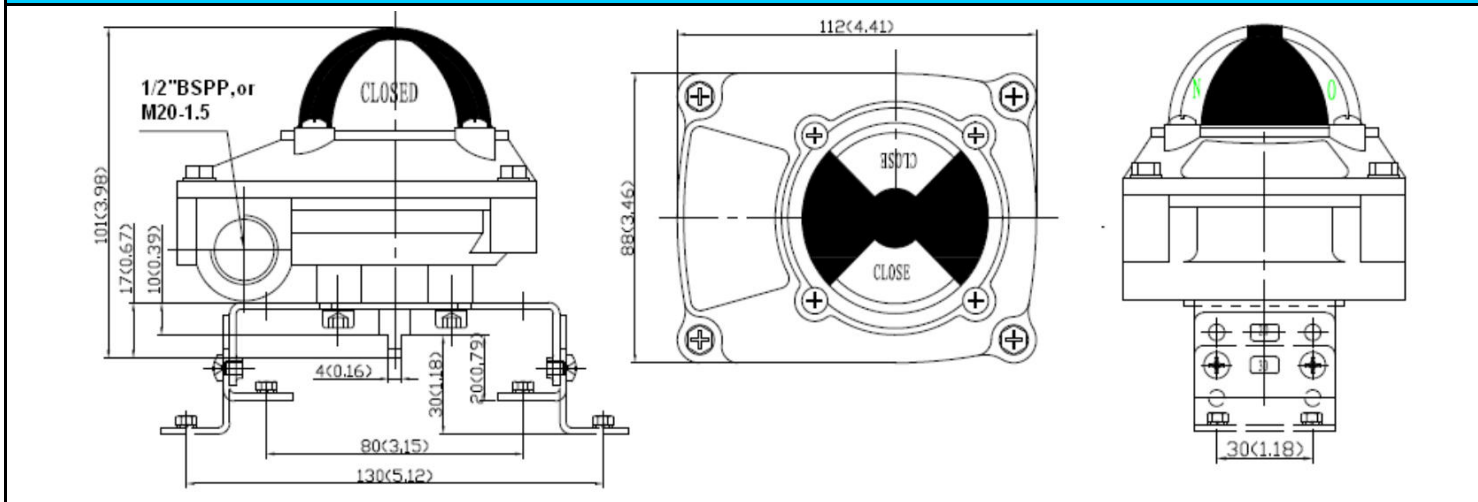


Data Sheet

Product ID ALS200M2

PRODUCT NAME			
Valve Monitor			
MODEL NO.			
ALS200M2			
DESCRIPTION OF THE PRODUCT			
The ALS200M2 series valve monitor is a rotary position indication device. Armed with mechanical switch this device can senses mechanical position (on/off) of valve for remote PLC or PC indication. The visual indicator on the top of the device can also clearly display the valve position for local detection.			
SPECIFICATIONS AND TECHNICAL DATA		APPROVED BY	
Enclosure	Die-casting aluminum dichromate conversion with polyester powder coating and O-ring sealed	C SP [®] US CE IP67 NEMA 4.4X	
O-rings	Buna N	WIRING DIAGRAM(M2)	
Environment	Type 4, 4X, IP67		
Area Classification	Standard		
Fasteners	Stainless steel		
Shaft	Stainless steel Namur		
Conduit Entries	Two G½" Also available with two ½" NPT, M20-1.5		
Terminal Strip Contacts	8		
Mounting Bracket	MB – 2.3: 30 x 80, 130 H:20, 30 (Carbon steel)		
Sensor: Honeywell Mechanical Switches			
Model No.	M2(2SPDT)		
Operating Voltage	Max: 5A 125-250 VAC		
Ambient Temperature	-25°C-85°C		

DRAWING AND DIMENSION



Data Sheet

Product ID ALS210M2

PRODUCT NAME

Valve Monitor

MODEL NO.

ALS210M2

DESCRIPTION OF THE PRODUCT

The ALS210M2 series valve monitor is a rotary position indication device. Armed with mechanical switch this device can sense mechanical position (on/off) of valve for remote PLC or PC indication. The visual indicator on the top of the device can also clearly display the valve position for local detection.



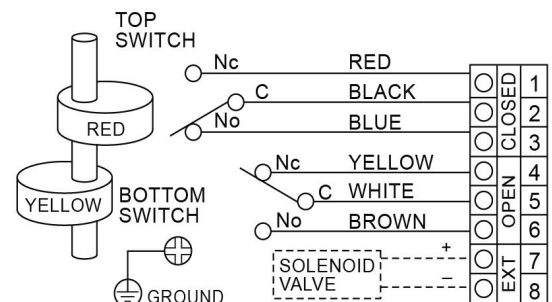
SPECIFICATIONS AND TECHNICAL DATA

Enclosure	Aluminium die casting
O-rings	NBR
Environment	IP67 (Optional: IP68)
Fasteners	Stainless steel
Shaft	Stainless steel Namur
Conduit Entries	2 - G1/2"
	Optional: 2 - 1/2"NPT , 2 - M20x1.5
Terminal Strip Contacts	8
Ambient Temperature	-20°C-80°C
Mounting Bracket	30 x 80, 130 H:20, 30 (Carbon steel)

Mechanical Switches Approved By

UL, CSA, SEMKO, SEV, EN61058-1

WIRING DIAGRAM

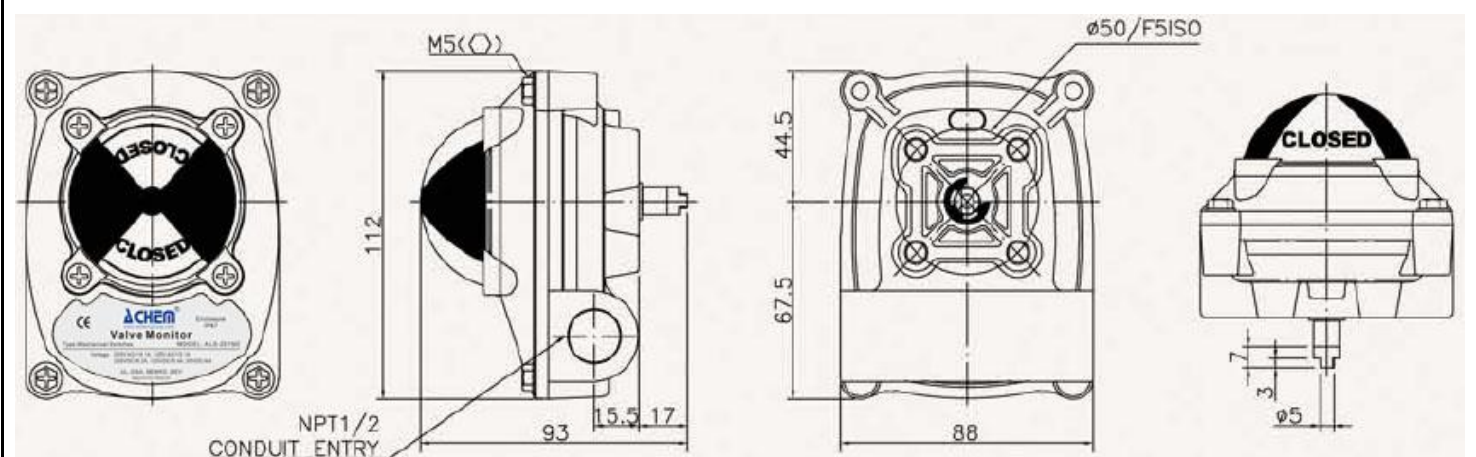


Sensor: Mechanical Switches

Model No.	SS5GL (Omron micro switches)
Operating Voltage	250V AC/3A, 125V AC/5A 250VDC/0.2A, 125VDC/0.4A, 30VDC/4A



DRAWING AND DIMENSION (mm)



ALLIED AUTOMATION

www.allied-actuator.com

info@allied-actuator.com